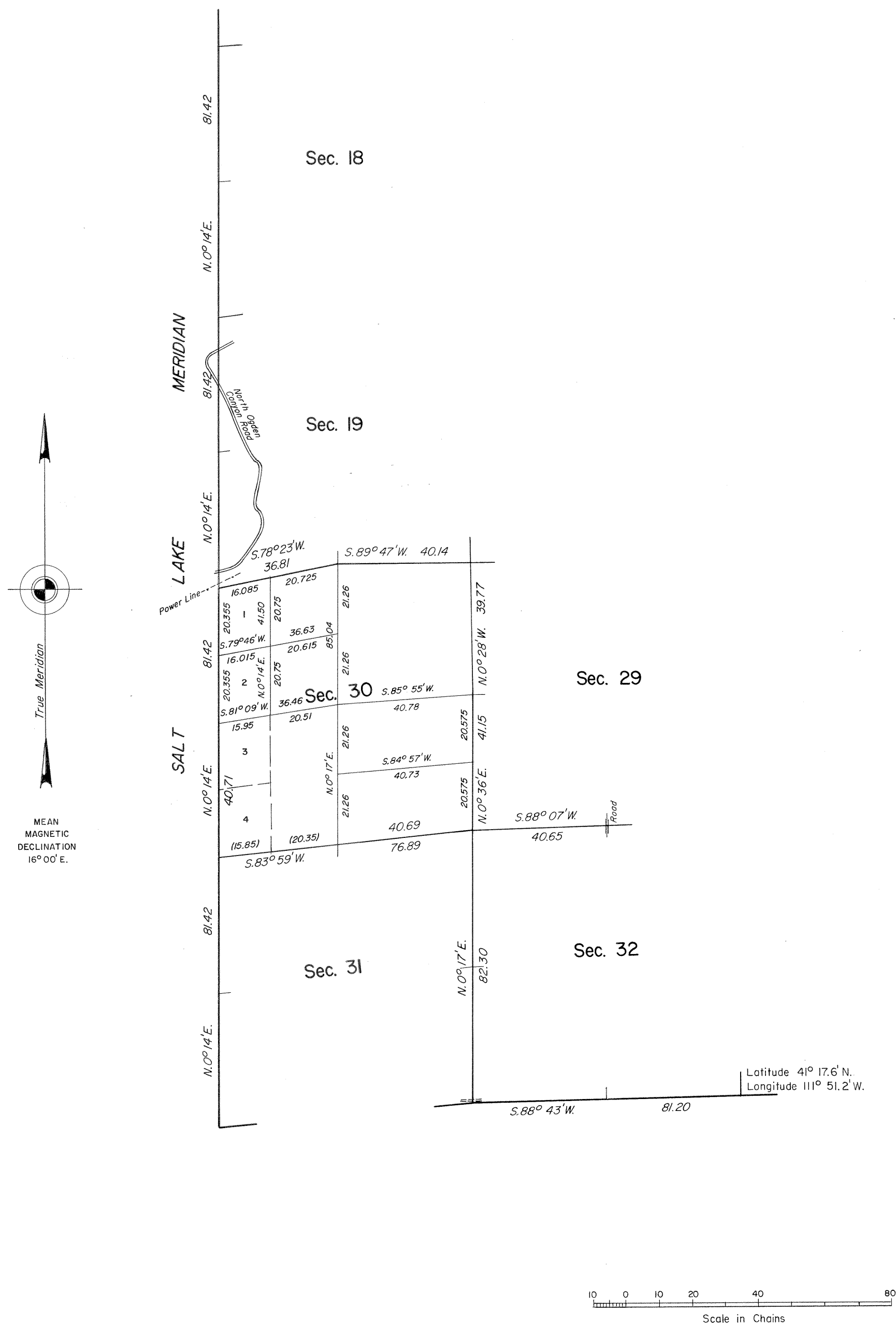


TOWNSHIP 7 NORTH, RANGE 1 EAST, OF THE SALT LAKE MERIDIAN, UTAH.
DEPENDENT RESURVEY AND SUBDIVISION OF SECTION SURVEY



A history of surveys is contained in the field notes.

This plat represents the dependent resurvey of a portion of the Salt Lake Meridian (west boundary), a portion of the south boundary, and a portion of the subdivisional lines, designed to restore the corners in their true original locations according to the best available evidence; and a partial subdivisional survey of section 30, T. 7 S., R. 1 E., Salt Lake Meridian, Utah.

The lottings and areas are as shown on the plats approved November 14, 1871 and April 24, 1890.

Survey executed by Gary L. Kratz, Supervisory Cadastral Surveyor, beginning June 12, 1980 and completed July 24, 1980, pursuant to Special Instructions dated May 16, 1980, for Group No. 601, Utah.

UNITED STATES DEPARTMENT OF THE INTERIOR
BUREAU OF LAND MANAGEMENT
Salt Lake City, Utah January 11, 1983

This plat is strictly conformable to the approved field notes and the survey having been correctly executed in accordance with the requirements of law and the regulations of this Bureau, is hereby accepted.

For the Director

Glen B Hatch
Chief Cadastral Surveyor for Utah